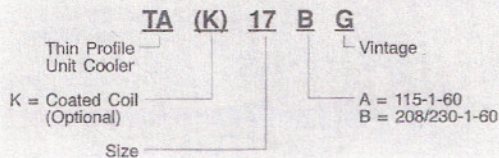


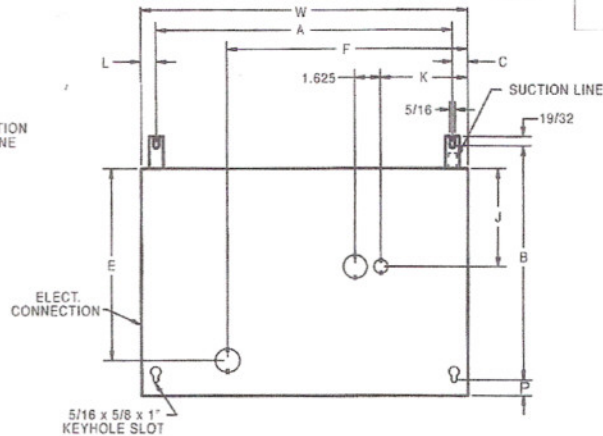
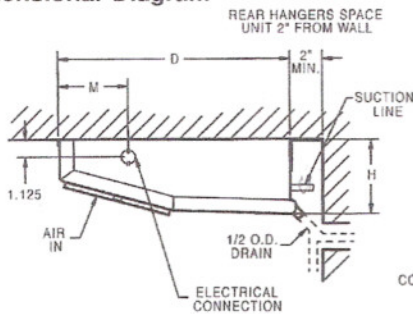
Thin Profile Air Defrost Unit Cooler

NOMENCLATURE



FOR FOOD SERVICE INSTALLATIONS
... seal any joint between unit cooler and cooler liner with a sealant listed by the National Sanitation Foundation, Standard 51

Dimensional Diagram



Dimensional Data

Model No.	Dimensions (in.)													Connections (in.)			Approx. Shipping Wt. (lbs.)
	A	B	C	D	E	F	H	J	K	L	M	W	Inlet	Suction	Drain		
10	14 5/8	14	15 1/16	13 1/2	10 1/2	11 3/8	4 1/2	8 7/8	2 1/2	15 1/16	4 3/8	16 1/2	3/8 OD	3/8 ID	1/2 OD	14	
13	18 5/8	14	15 1/16	13 1/2	10 1/8	10 1/4	4 1/2	8 3/8	9 1/2	15 1/16	4 3/8	20 1/2	3/8 OD	3/8 ID	1/2 OD	17	
17	22 1/8	15	15 1/16	14 1/2	11 1/8	12	4 1/2	9 3/8	11 1/4	15 1/16	4 3/8	24	3/8 OD	1/2 ID	1/2 OD	21	
23	29 3/4	15	15 1/16	14 1/2	13	20 7/8	4 1/2	10 3/4	10 1/4	15 1/16	4 3/8	31 5/8	3/8 OD	1/2 ID	1/2 OD	28	
30	38 1/8	15	15 1/16	14 1/2	13	29 3/4	4 1/2	10 3/4	9 3/4	15 1/16	4 3/8	40	3/8 OD	1/2 ID	1/2 OD	33	
43	51 1/2	15	15 1/16	14 1/2	13	48 3/4	4 1/2	10 3/4	13 1/4	15 1/16	4 3/8	53 3/8	1/2 OD	5/8 ID	1/2 OD	44	
55	51 1/2	15	15 1/16	14 1/2	13	49	6 3/4	10 3/4	11	15 1/16	4 3/8	53 3/8	1/2 OD	5/8 ID	1/2 OD	53	

Expansion Valve Recommendations

Model Size	25°F Sat. Suction Temp.				20°F Sat. Suction Temp.			
	BTUH @ 10°F TD	R-22		BTUH @ 15°F TD	R-22			
		Alco	Sporlan		Alco	Sporlan		
10	1000	HF-1/4HC	FV-1/5C	1500	HF-1/4HC	FV-1/5C		
13	1300			1950				
17	1700			2550				
23	2300			3450	HF-1/2HC	FV-1/3C		
30	3000	4500						
43*	4300	HFE-1/2HC	FVE-1/2C	6450	HFE-1HC	FVE-1C		
55*	5500			8250				

* Size 43 and 55 use external equalized valves.

Mounting

The thin profile air defrost unit cooler is designed for mounting from the top of the cooler. Drill holes for screws in accordance with mounting dimensions A and B given in Dimensional Data.

After unpacking the unit, remove the fan panel and arrange the rear brackets as shown in the drawing. Insert the screws for mounting the rear brackets into the top of the cooler cabinet. Slip the rear brackets, attached to the unit, between the screw head and cabinet and secure in place. Install the front mounting screws. For proper drainage, the unit should be installed level.

Replacement Parts

Description	All Sizes Part Number
115V Motor	25300701
208/230V Motor	25300801
Fan Blade	5101B
Fan Guard	5054D
Motor Mount	91179001

Thin Profile Air Defrost Unit Cooler

NOMENCLATURE

TA (K) 17 B G

Thin Profile Unit Cooler

L Vintage

K = Coated Coil (Optional)

A = 115-1-60

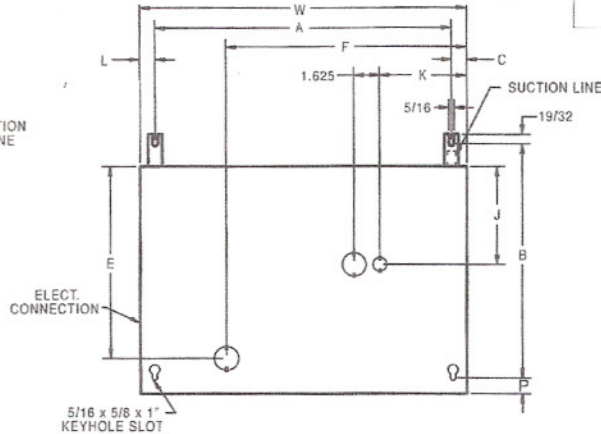
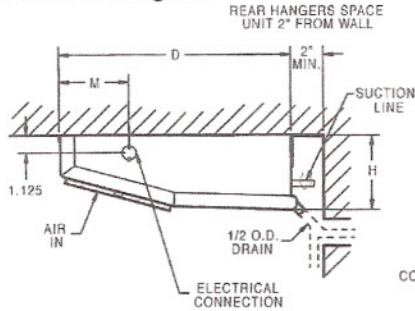
B = 208/230-1-60

Size



FOR FOOD SERVICE INSTALLATIONS
... seal any joint between unit cooler and cooler liner with a sealant listed by the National Sanitation Foundation, Standard 51

Dimensional Diagram



Dimensional Data

Model No.	Dimensions (in.)												Connections (in.)			Approx. Shipping Wt. (lbs.)
	A	B	C	D	E	F	H	J	K	L	M	W	Inlet	Suction	Drain	
10	14 5/8	14	15 1/16	13 1/2	10 1/2	11 3/8	4 1/2	8 7/8	2 1/2	15 1/16	4 3/8	16 1/2	3/8 OD	3/8 ID	1/2 OD	14
13	18 5/8	14	15 1/16	13 1/2	10 1/8	10 1/4	4 1/2	8 3/8	9 1/2	15 1/16	4 3/8	20 1/2	3/8 OD	3/8 ID	1/2 OD	17
17	22 1/8	15	15 1/16	14 1/2	11 1/8	12	4 1/2	9 3/8	11 1/4	15 1/16	4 3/8	24	3/8 OD	1/2 ID	1/2 OD	21
23	29 3/4	15	15 1/16	14 1/2	13	20 7/8	4 1/2	10 3/4	10 1/4	15 1/16	4 3/8	31 5/8	3/8 OD	1/2 ID	1/2 OD	28
30	38 1/8	15	15 1/16	14 1/2	13	29 3/4	4 1/2	10 3/4	9 3/4	15 1/16	4 3/8	40	3/8 OD	1/2 ID	1/2 OD	33
43	51 1/2	15	15 1/16	14 1/2	13	48 3/4	4 1/2	10 3/4	13 1/4	15 1/16	4 3/8	53 3/8	1/2 OD	5/8 ID	1/2 OD	44
55	51 1/2	15	15 1/16	14 1/2	13	49	6 3/4	10 3/4	11	15 1/16	4 3/8	53 3/8	1/2 OD	5/8 ID	1/2 OD	53

Expansion Valve Recommendations

Model Size	BTUH @ 10°F TD	25°F Sat. Suction Temp.		20°F Sat. Suction Temp.		
		R-22		BTUH @ 15°F TD	R-22	
		Alco	Sporlan		Alco	Sporlan
10	1000	HF-1/4HC	FV-1/5C	1500	HF-1/4HC	FV-1/5C
13	1300					
17	1700					
23	2300					
30	3000					
43*	4300	HFE-1/2HC	FVE-1/2C	6450	HFE-1HC	FVE-1C
55*	5500			8250		

* Size 43 and 55 use external equalized valves.

Mounting

The thin profile air defrost unit cooler is designed for mounting from the top of the cooler. Drill holes for screws in accordance with mounting dimensions A and B given in Dimensional Data.

After unpacking the unit, remove the fan panel and arrange the rear brackets as shown in the drawing. Insert the screws for mounting the rear brackets into the top of the cooler cabinet. Slip the rear brackets, attached to the unit, between the screw head and cabinet and secure in place. Install the front mounting screws. For proper drainage, the unit should be installed level.

Replacement Parts

Description	All Sizes Part Number
115V Motor	25300701
208/230V Motor	25300801
Fan Blade	5101B
Fan Guard	5054D
Motor Mount	91179001